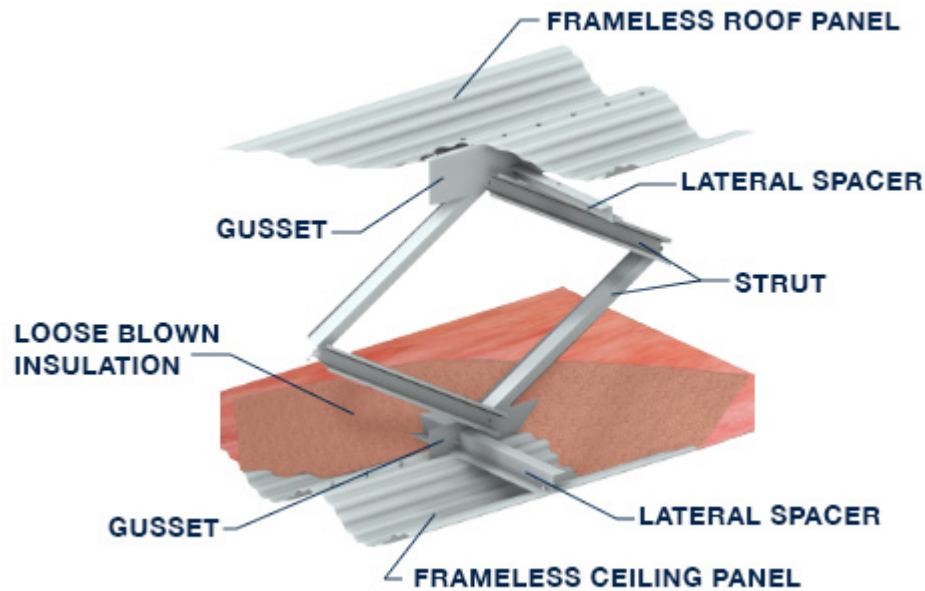


ENERGY EFFICIENCY - INSULATION SYSTEMS

INDUSTRIAL | COMMERCIAL | RECREATIONAL | INSTITUTIONAL

BEHLEN
Made Strong

FRAMELESS ROOF INSULATION - BLOWN IN MINERAL WOOL



FEATURES

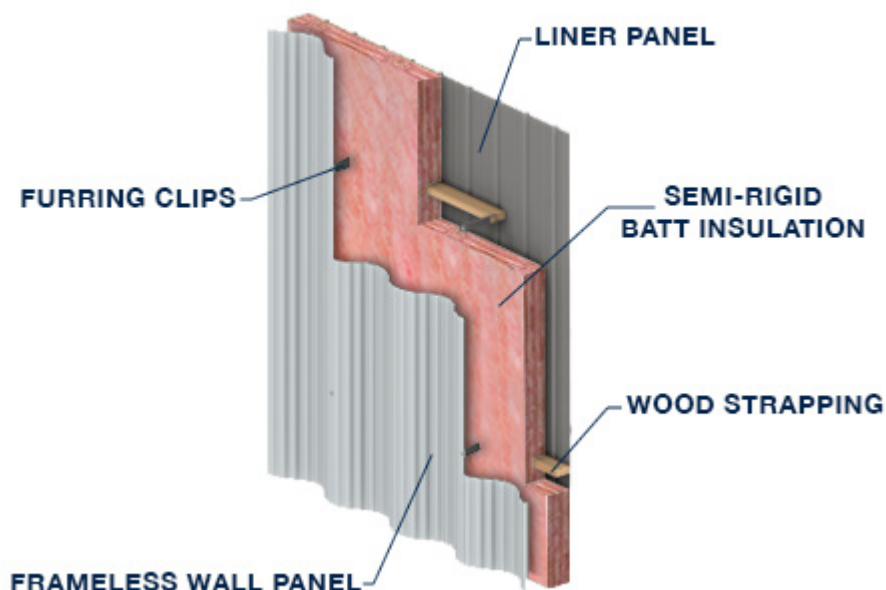
- Flexibility to meet energy codes
- Cost effective to install and maintain
- Ceiling acts as vapour barrier
- Installation after shell finished
- Steel liner provides strong protection to insulation system
- Protection from elements in enclosed building

BENEFITS

- High thermal performance for heat and cold for compliance with applicable energy codes
- Clean roof appearance
- Ease of installation saves on initial construction and long-term maintenance
- Long-term weather protection backed by warranties

Strut Spacing	Insulation Thickness	Effective U-Value	Effective R-Value
60 in	8" R 3.6/in	0.037	27.2
72 in	8" R 3.6/in	0.035	28.8
60 in	12" R 3.6/in	0.026	38.7

FRAMELESS WALL INSULATION - WOOD FURRING CLIPS AND STRAPPING



FEATURES

- Flexibility to meet energy codes
- Steel liner panel that acts as integral vapour barrier
- Steel liner available in Galvalume or range of colours to provide attractive and clean finish to the roof
- Steel liner provides strong protections to insulation system
- Cost effective to install and maintain
- Protection from elements in enclosed building
- Option to use other finishing systems

BENEFITS

- High thermal performance for heat and cold for compliance with applicable energy codes
- Clean wall appearance
- Ease of installation saves on initial construction and long-term maintenance
- Long-term weather protection backed by warranties

Description	Insulation Thickness	Effective U-Value	Effective R-Value
Semi Rigid Batt	6.5" R 4.2/in	0.036	27.9
Rigid Batt and Loose to fill cavity	6.5" R 4.2/in + loose	0.030	33.8
Dense Semi Rigid	6.5" R 6.0/in	0.026	38.6
Deep Furring Clip	11" R 4.2/in	0.022	45.9



BEHLEN

Made Strong

HEAD OFFICE

927 Douglas Street
Brandon, Manitoba R7A 7B3 Canada

E: info@behlen.ca

T: +1-204-728-1188

F: +1-204-725-4932

www.behlen.ca

