



ENERGY EFFICIENCY

WITH

BEHLEN

Made Strong

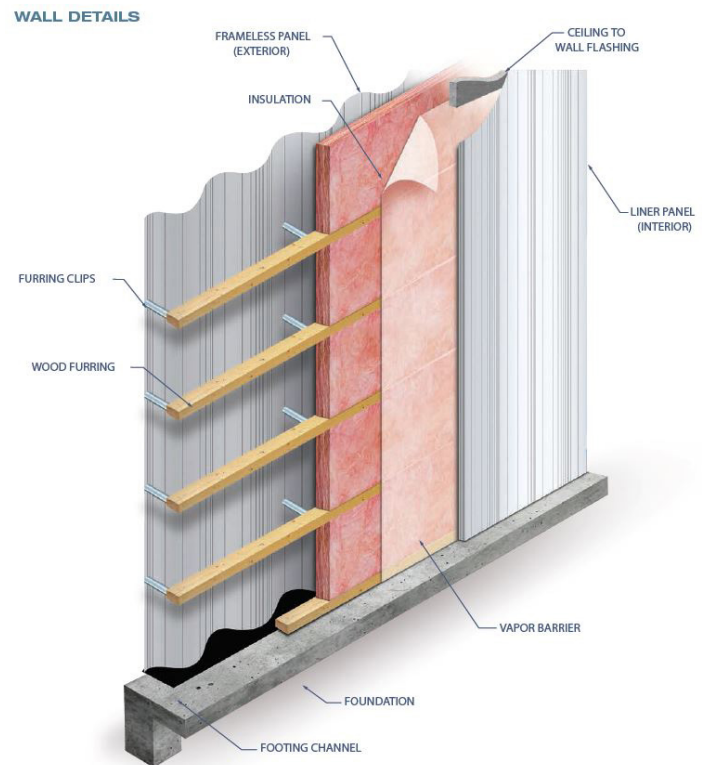
BEHLEN Industries LP | 927 Douglas St. | Brandon, MB | R7A 7B3
T 204.728.1188 | Toll Free: 1.888.351.1035 | F 204.725.4932
www.behlen.ca | info@behlen.ca

Frameless is a unique Steel Building System concept that offers visual appeal, creative versatility and durability, while at the same time maximizing the potential energy savings and minimizing the environmental impact.



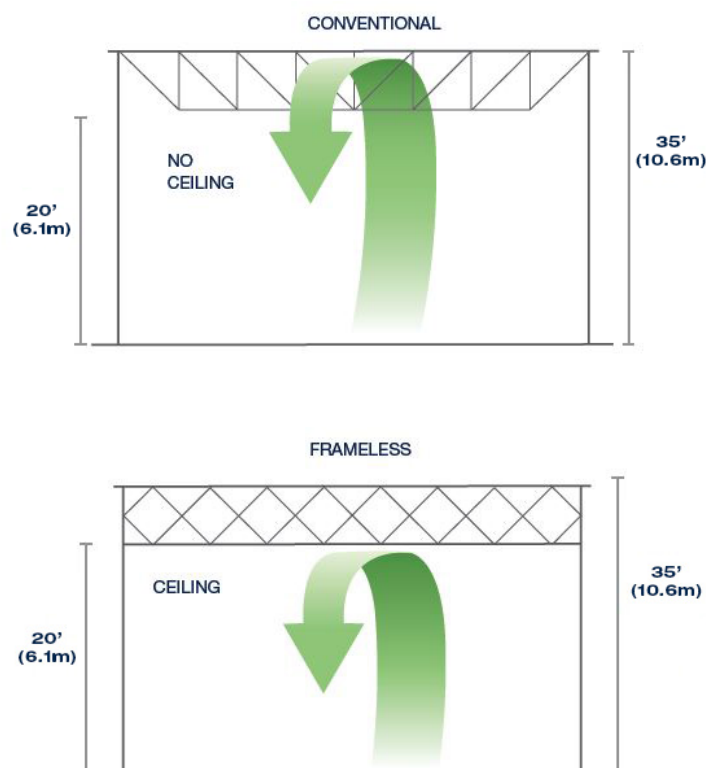
ENERGY EFFICIENCY WITH BEHLEN

- Uniform wall insulation minimizes energy loss caused by thermal bridging
- Thanks to our revolutionary ceiling design, the space between the ceiling and roof does not need to be heated
- Compatible beyond R60 insulation, more than three-times the R factor of typical conventional buildings, to offer unparalleled protection against extreme heat or cold
- Obstruction-free interiors offer easy climate control with fast heating and cooling, leading to lower operating costs



ENERGY SAVINGS

- Roof system provides a ventilated attic that promotes lower energy costs while eliminating the potential for wet insulation caused by condensation or leaks
- Attic cavity can accommodate wiring and HVAC duct work and pipes, saving on space and cost
- Ceiling panel laps are sealed to effectively create a vapour barrier, eliminating the need to install one
- Natural ceiling provides a bright and clean interior, reducing lighting requirements and lowering energy bills



TESTIMONY

We selected the BEHLEN building because of its design which allows maximum use of the inside area and its energy efficiency. We are quite pleased with our decision to go with the BEHLEN building and would not hesitate to recommend this type of structure to anyone contemplating the construction of a similar building.

-Mr. C. Fulsher, Secretary-Treasurer, R.M. of Gimli, MB

We chose the BEHLEN Company to supply our steel building frame mainly because of the structural design, insulation factor, energy efficiency, fantastic purchase price and the ongoing service that you provided through the design and construction phases. Burley's has also been involved in other ice-rink projects that have utilized the frameless building system. In each instance the end user has been more than satisfied with the finished product.

-Mr. P. McGuigan, Burley's Rink Supply Inc., Johnstown, PA



BEHLEN

Made Strong

HEAD OFFICE

927 Douglas Street
Brandon, Manitoba R7A 7B3 Canada

E: info@behlen.ca

T: +1-204-728-1188

F: +1-204-725-4932

TF: +1-888-315-1035

www.behlen.ca

